

HSF

Recommended P.C.B Layout(Top Side)
(PCB BOARD TOLERANCE±0.05)

NOTES:
 Current Rating: 2.0AMP
 Contact Resistance: 20mΩ Max
 Withstand Voltage: 500V AC/DC
 Insulation Resistance: 1000MΩ Min
 Operation Temperature: -40°C to +105°C

Contact Material: Phosphor Bronze
 Contact plating: Au Or Sn over Ni
 Insulator Material: PA9T+30%GF UL94V-0

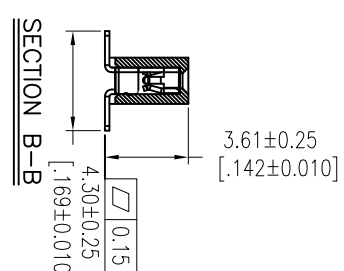
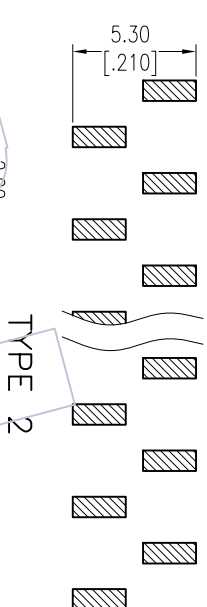
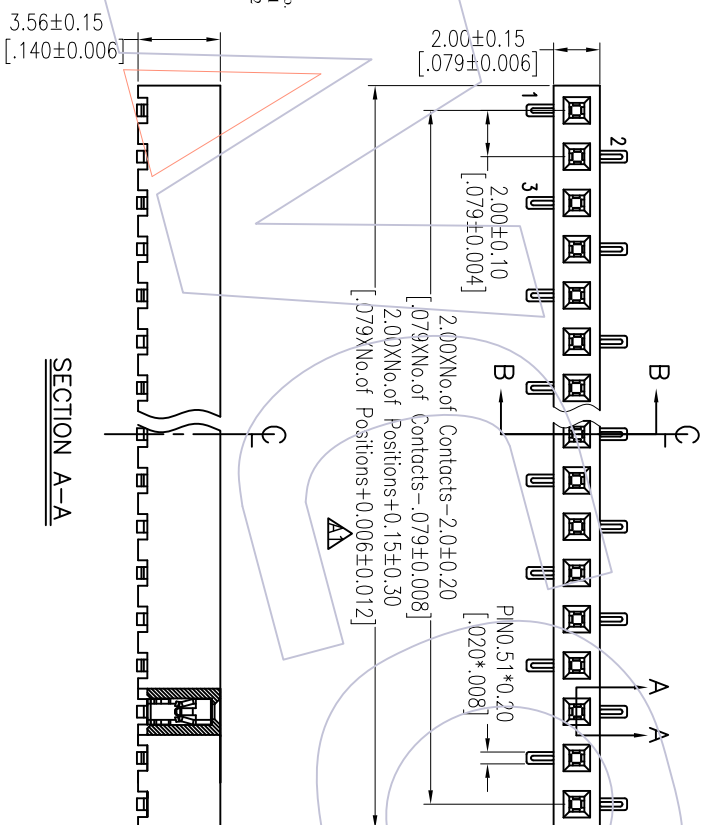
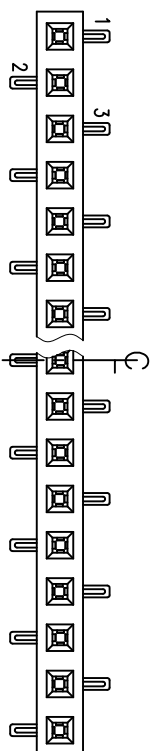
Ordering Information

2235-1 XX M XX CUN T X

No. of Pins per Row: 02~40Pins
 Contact Plating:
 C0=Gold Flash
 G3=10μ" Gold
 G4=15μ" Gold
 G5=30μ" Gold
 S0=Gold Flash/Tin
 S3=10μ" Gold/Tin
 S4=15μ" Gold/Tin
 S5=30μ" Gold/Tin
 SN=Tin
 SM=Mate Tin

Packing:
 T=Tube
 P=Tube+CAP
 R=Tray&Reel+CAP

Series No.
 1=Type 1
 2=Type 2



Item	Pitch	Mating
Standard	2.00	1215/1220
Alternate		

TITLE	PART NO.
TYPE 1	2235-1XXMXXCUNT1
TYPE 2	2235-1XXMXXCUNT2

REV	DATE	MODIFICATION DESCRIPTION	CHANGE	OPERATION	DRAW	DATE	SCALE	FIT	PART NO.
A1	2013/06/21	Modify drawing		X.X	Wang	2013/06/21	mm		SEE TABLE
A0	2012/07/12	NEW		X.XXX	CHECK		A4		TITLE: FH2.0mm SINGLE ROW 180° SMT H=3.56 W=2.0
REV	DATE	MODIFICATION DESCRIPTION	CHANGE	Angle	APPROVE	DATE	SHEET	PROJ.	Customer NO.
				± 3'			1/1		

WCON

Http: www.wcon.com

WCON-Dongguan
 Tel: +86 769 85358920
 Fax: +86 769 85358915
 E-mail: sales@wcon.com

WCON-Kunshan
 Tel: +86 512 57468408
 Fax: +86 512 57468468
 E-mail: sales@wcon.com