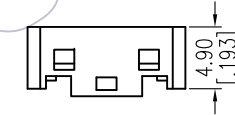
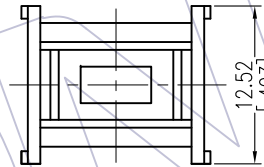
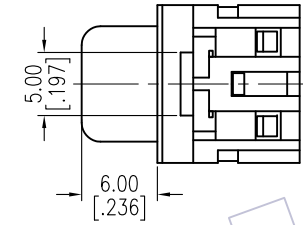
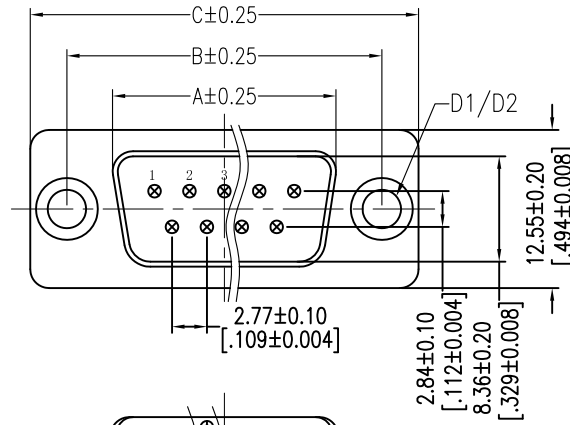


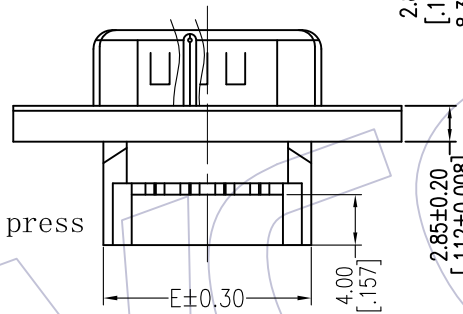
HSF

NOTES:
 Current Rating: 3.0AMP
 Contact Resistance: 20mΩ Max
 Withstand Voltage: 500V AC/DC
 Insulation Resistance: 1000MΩ Min
 Operation Temperature: -55°C to +105°C

Contact Material: Phosphor Bronze/Brass
 Contact plating: Sel. Au over Ni
 Insulator Material: PBT+30%G.F UL94V-0
 Sheel: Cold Roller Steel, Ni Plated
 Nut: Brass, Sn over Ni Plated



After press

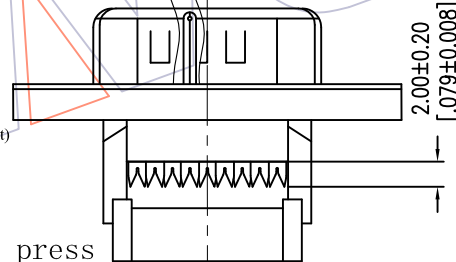


COVER

Ordering Information

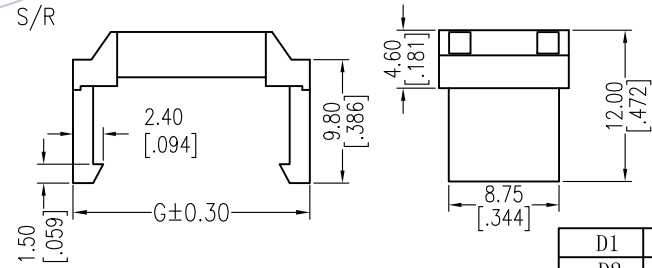
6224-XX M N XX X 0 X

No. of Pins 09,15,25,37P	Contact Plating S0=Gold Flash/Ni S3=10u"Gold/Ni S4=15u"Gold/Ni S5=30u"Gold/Ni	Insulator Color B:Black U:Blue	Screw 1=W/O Screw thread(three part) 2=W/T Screw thread(three part) 3=W/O Screw thread(two part) 4=W/T Screw thread(two part) 5=W/T Screw thread,Don't lock(two part) 6=W/T Screw thread&Nut,Don't lock (two part)
-----------------------------	---	--------------------------------------	--



Before press

S/R



No. of Positions	DIM "A"	DIM "B"	DIM "C"	DIM "D1"	DIM "D2"	DIM "E"	DIM "F"	DIM "G"	D1	D2
									6224-XXMNXXX01/3	6224-XXMNXXX02/4
09	17.78	24.99	30.82			16.90	15.00	18.80		
15	26.15	33.32	39.24	W/O Screw thread	W/T Screw thread	25.60	23.30	26.90		
25	39.94	47.04	53.04	∅3.05	∅3.05, #4-40	38.90	37.00	40.50		
37	56.56	63.50	69.62			55.60	53.70	57.20		

REV	DATE	MODIFICATION DESCRIPTION	CHANGE	OPERATION	DRAW	DATE	SCALE	FIT	PART NO.	 Http: www.wcon.com WCON-Dongguan Tel: +86 769 85358920 Fax: +86 769 85358915 E-mail: sales@wcon.com WCON-Kunshan Tel: +86 512 57468408 Fax: +86 512 57468468 E-mail: salesks@wcon.com
A2	2017/03/01	Modify	△	X.X ±0.40	Ding	2017/03/01	UNIT	mm	SEE TABLE	
A1	2015/12/14	Modify △	-----	X.XX ±0.25	CHECK	DATE	SIZE	A4	TITLE: D-SUB MALE DUAL ROW IDC TYPE	
AO	2012/12/06	NEW	-----	X.XXX ±0.15	APPROVE	DATE	SHEET	1/1	Customer NO.	
				Angle ± 3'			PROJ.	⌀		
				DIM TOL						