

HSF

NOTES:

Withstand Voltage: 500V AC/Minute
 Insulation Resistance: 1000MΩ Min
 Operation Temperature: -55°C to +105°C

Insulator Material: PBT+30%G.F UL94V-0
 Shell: Cold Roller Steel, Sn Or Ni Plated
 Nut: Brass, Sn Over Ni Plated

Ordering Information

6221-XX M X 00 X 01

No. of Pins:

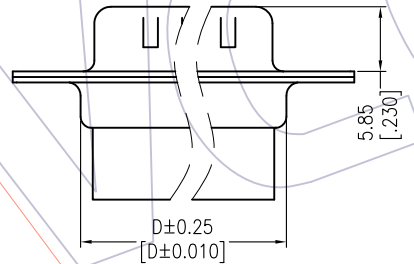
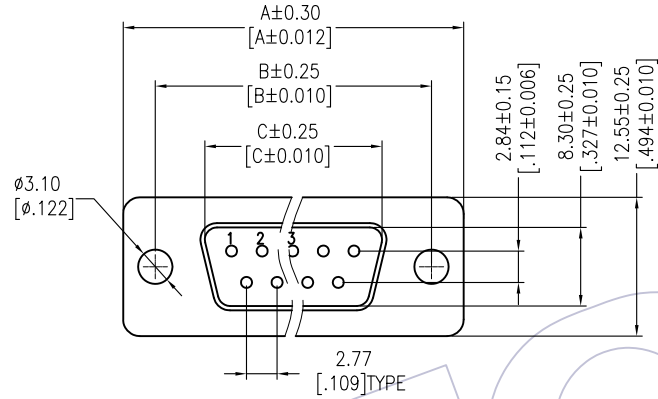
- 9P
- 15P
- 25P
- 37P

Type:

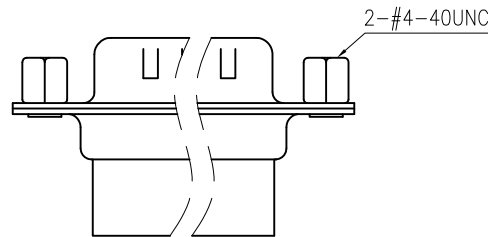
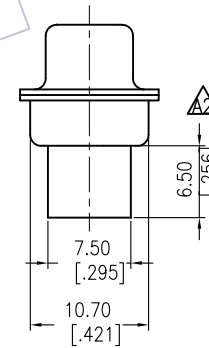
- B=With Back Nut
- F=With Front Nut
- N=Without Nut

Insulator Color:

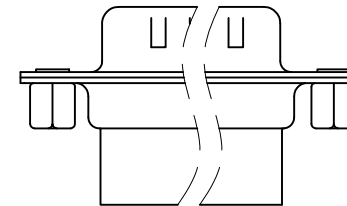
- B= Black
- U= Blue



6221-XXMN00X01



6221-XXMF00X01



6221-XXMB00X01

PINS	DIM "A"	DIM "B"	DIM "C"	DIM "D"
09	30.81 [1.213]	24.99 [0.984]	16.92 [0.666]	19.28 [0.759]
15	39.14 [1.541]	33.32 [1.312]	25.25 [0.994]	27.70 [1.091]
25	53.04 [2.088]	47.10 [1.855]	38.96 [1.534]	41.30 [1.626]
37	69.32 [2.729]	63.50 [2.500]	55.42 [2.182]	57.30 [2.256]

REV	DATE	MODIFICATION DESCRIPTION	CHANGE	OPERATION	DRAW	DATE	SCALE	FIT	PART NO.
A2	2015/10/22	Modify	△	x.x ±0.40	Allen	2015/10/22	UNIT	mm	6221-XXMX00X01 △
A1	2014/05/28	Modify 6221-XXMXXB01 to 6221-XXMX00X01	△	x.xx ±0.25	CHECK	DATE	SIZE	A4	TITLE: D-SUB MALE DUAL ROW CRIMP TYPE
A0	2012/12/03	NEW	-----	x.xxx ±0.15	APPROVE	DATE	SHEET	1/1	Customer NO.
				Angle ± 3'			PROJ.	⌀	
				DIM TOL					

WCON

Http: www.wcon.com

WCON-Dongguan Tel: +86 769 85358920 Fax: +86 769 85358915 E-mail: sales@wcon.com
 WCON-Kunshan Tel: +86 512 57468408 Fax: +86 512 57468468 E-mail: salesks@wcon.com